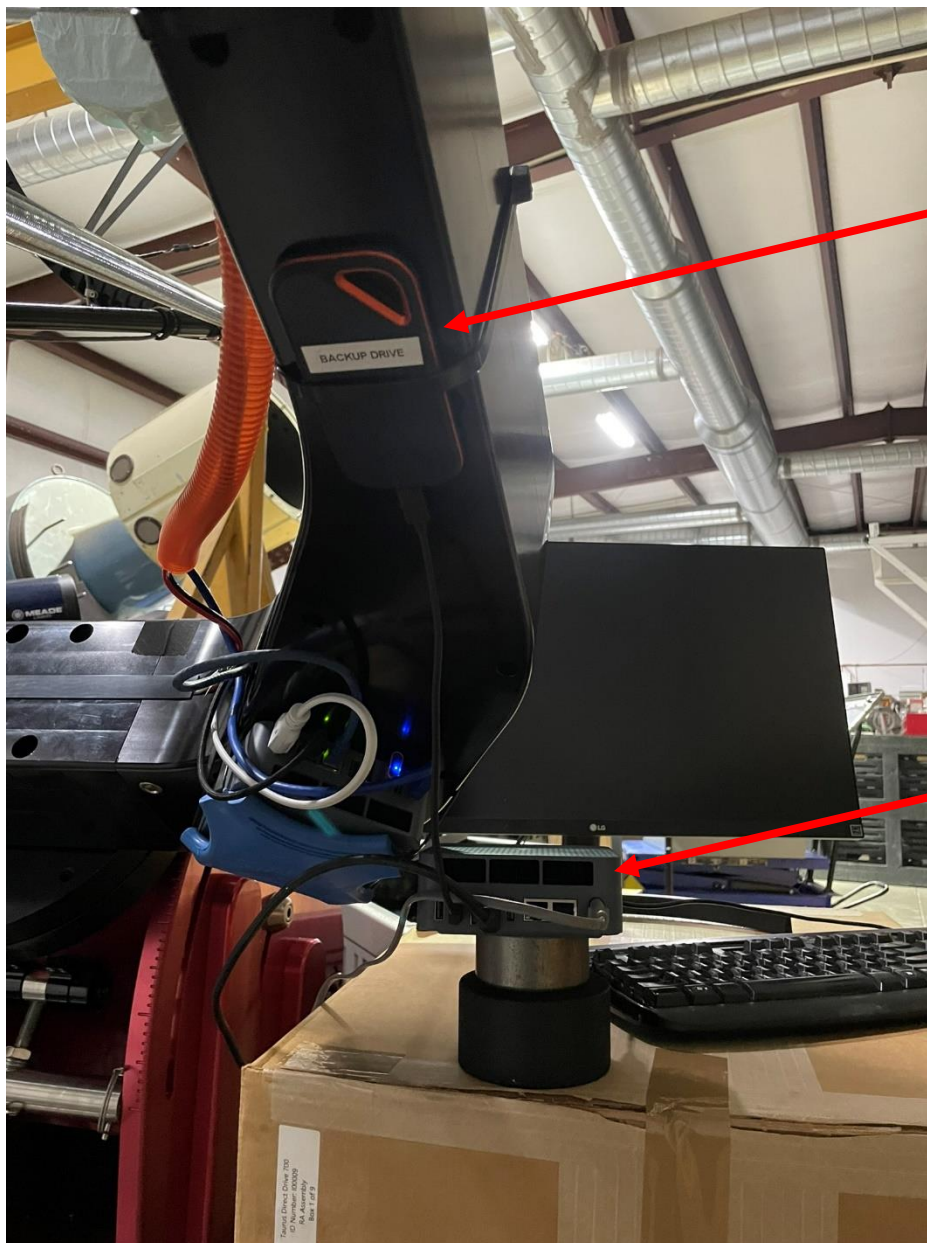


Harris Telescope

Computer Backup Restore

Tools

You will need a monitor, keyboard, and mouse. Place items and backup computer on elevated surface near external SSD and connect everything to backup mini-computer.



Backup External
SSD

Backup Mini-
Computer

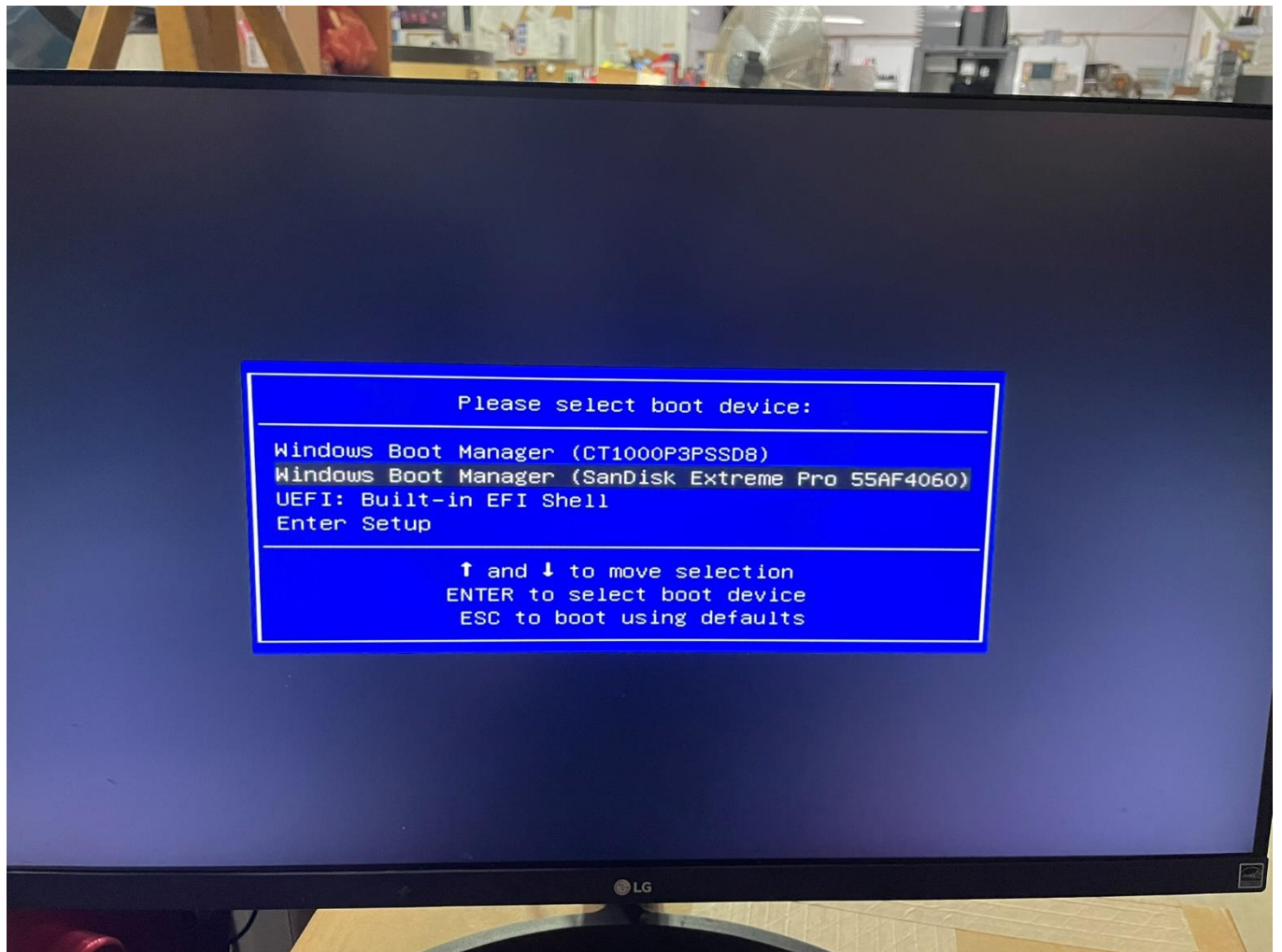
STEP 1

Turn on backup mini-computer and be ready to press F7 before Windows loads to get into the boot options.



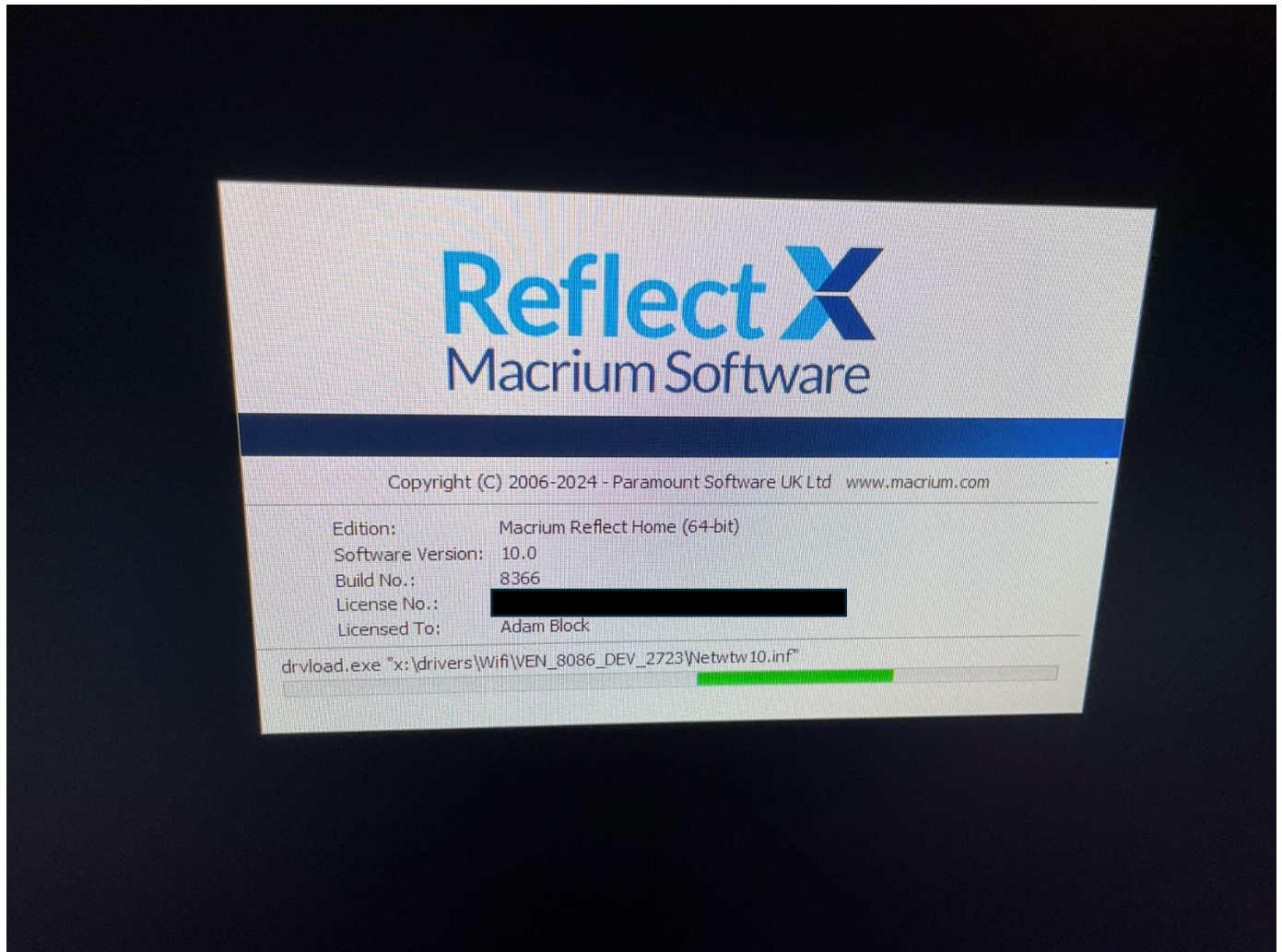
STEP 2

Select the External SSD to boot from.



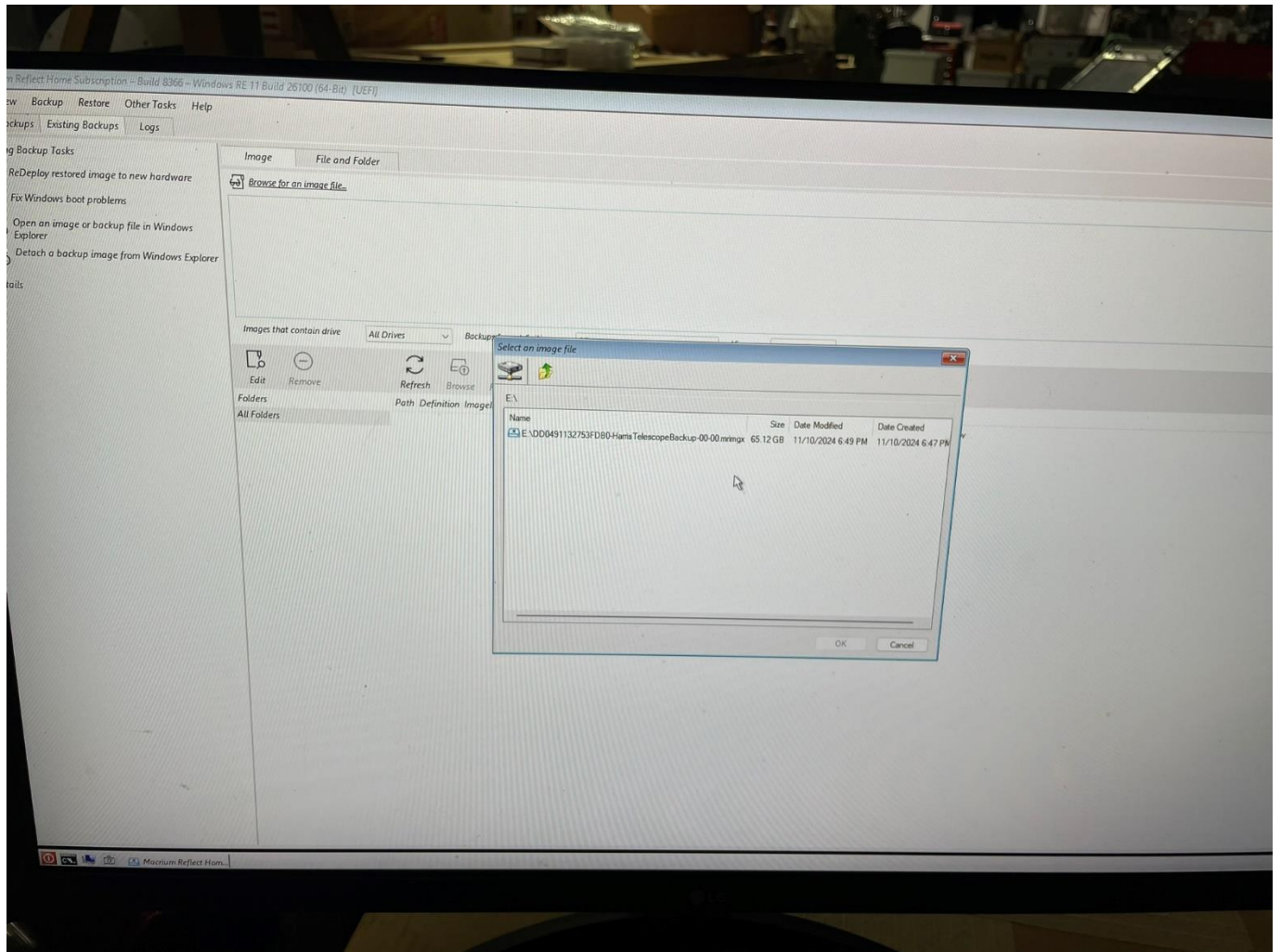
STEP 3

Macrium Reflect loads...



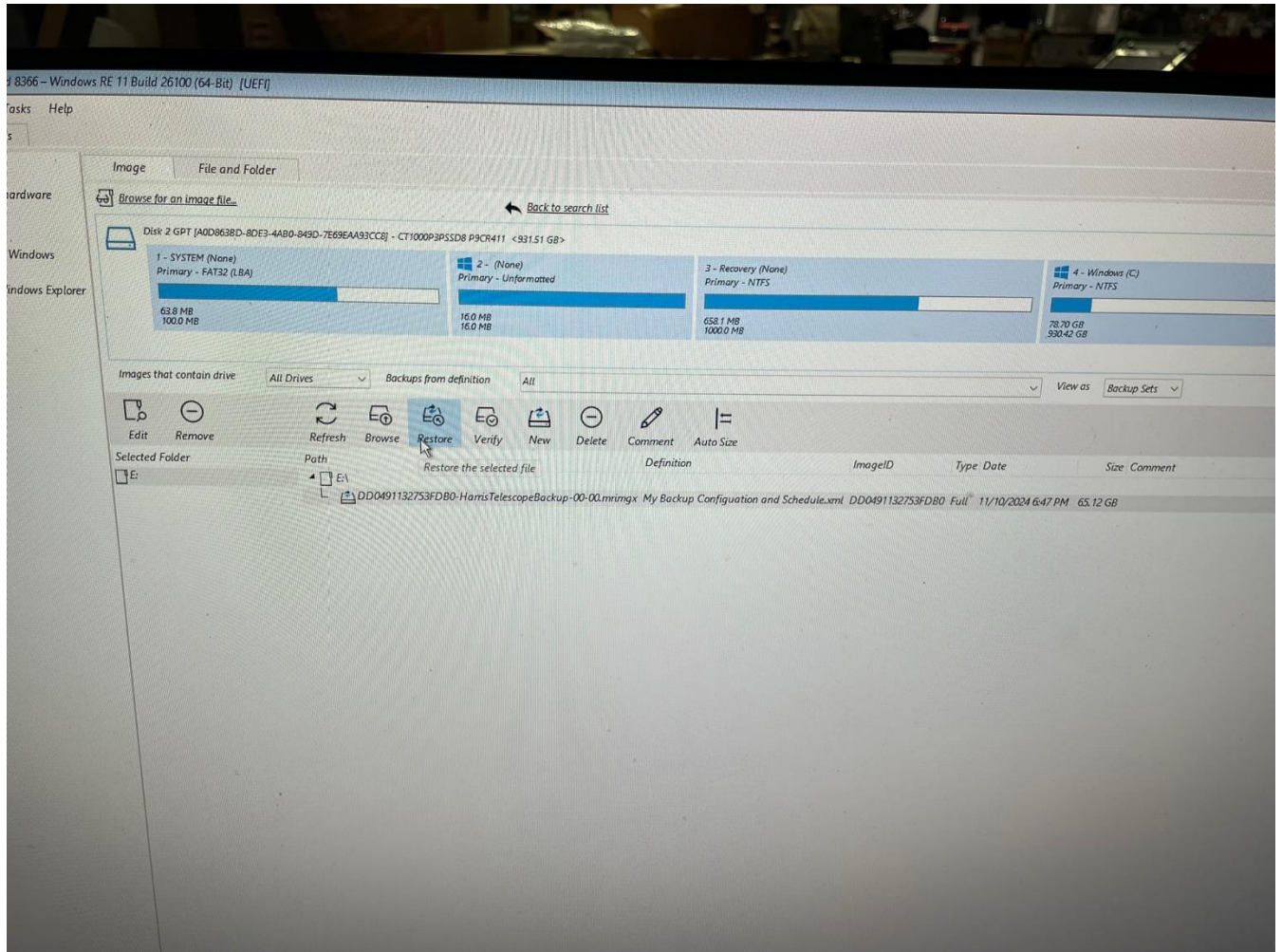
STEP 4

Select the backup image file from this disk. Choose the most recent date if more than one.



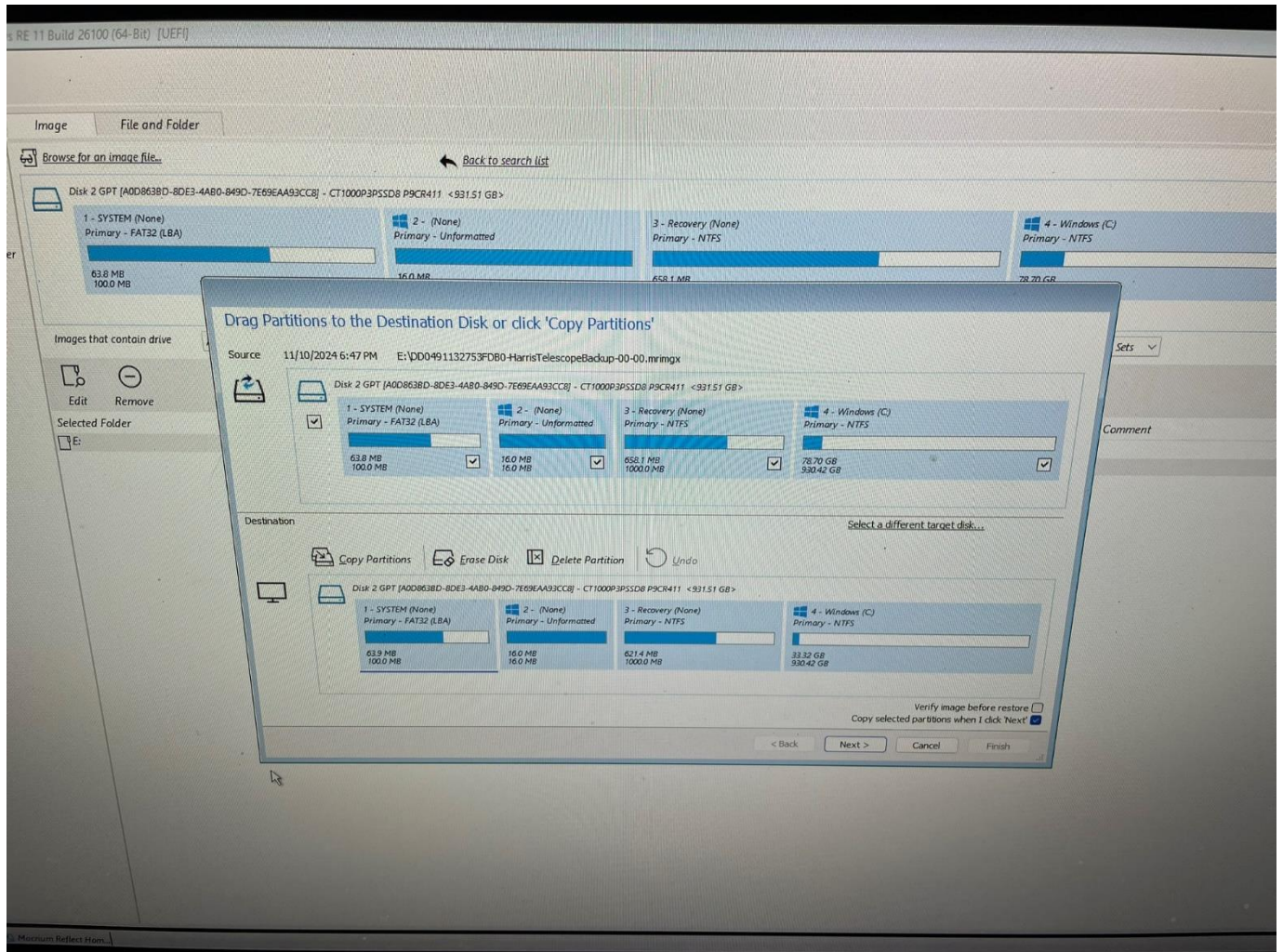
STEP 5

Click the Restore button as shown below.



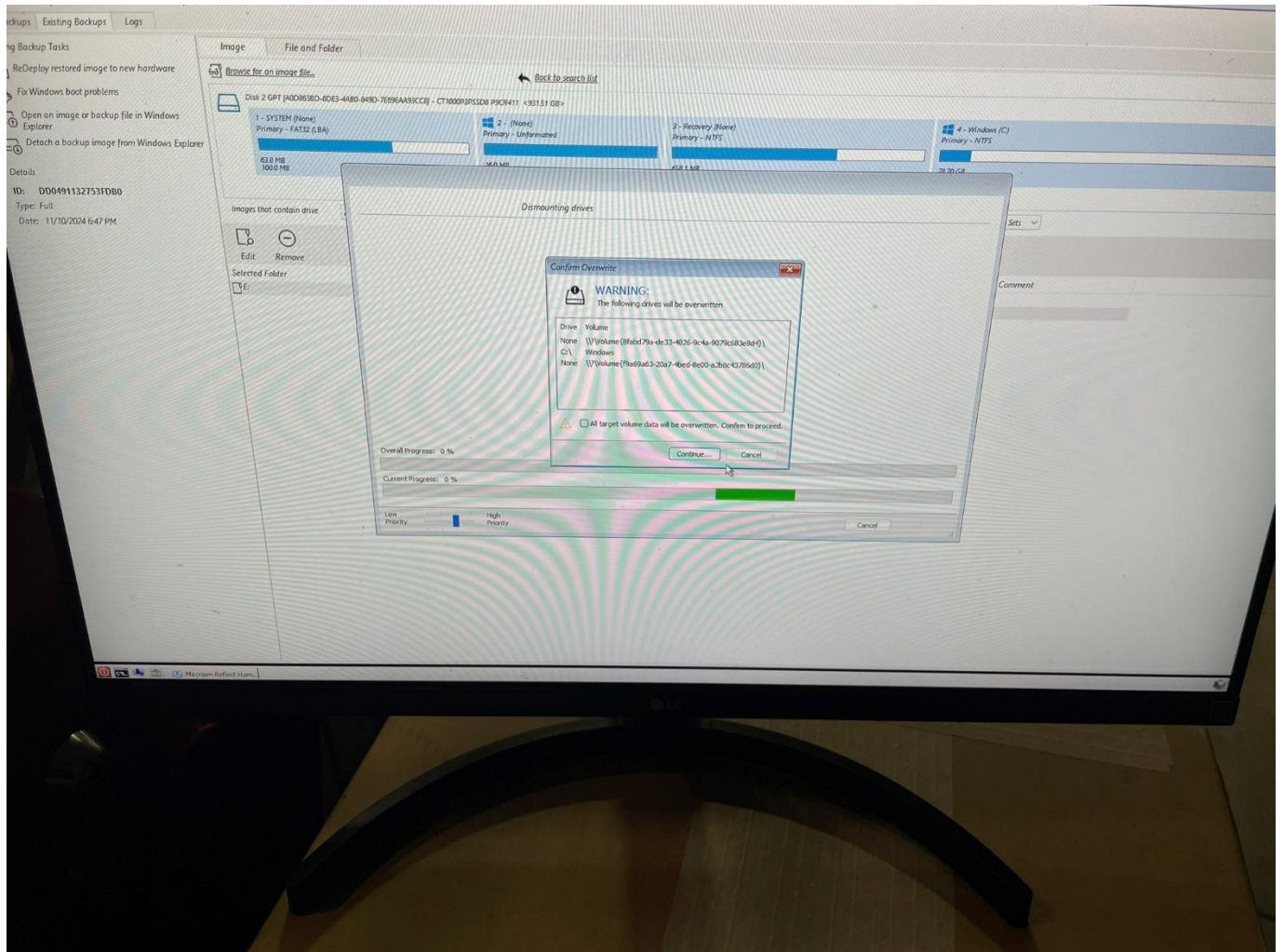
STEP 6

Make certain partitions are mapped from SSD to mini-computer drives in identical matches.



STEP 7

Confirm operation....



STEP 8

Restore takes place. Typically completes in 10 minutes or less. Once complete, computer will boot into Windows.

Finally put this restored computer into service on telescope.

